

2011-2012, FORD F250/350/550, Shifter Linkage Mounting Diagram PART #700169

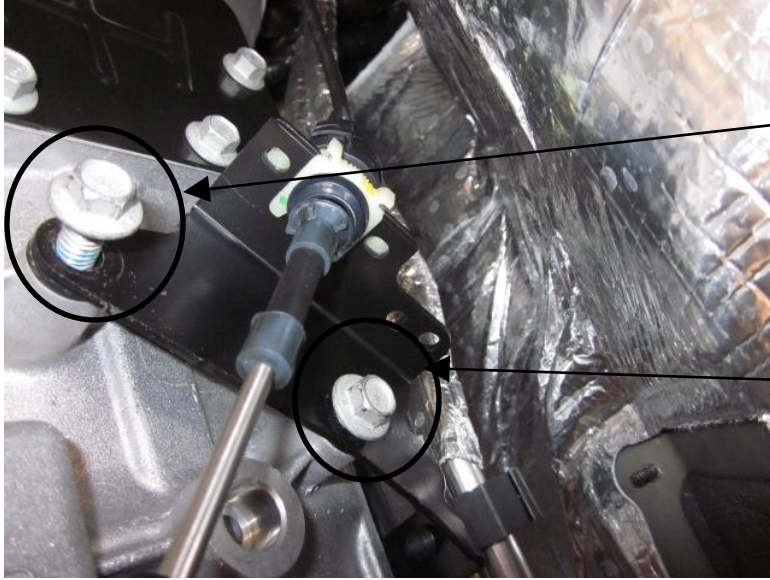
Important:

Manufacturer is not responsible for negligent use of vehicle with Shifter Linkage installed, including over tightening of screws and bolts causing damage to vehicle.

PARTS

(1) Shifter Linkage Guard

Part# 701529



remove
Lower OEM bolt

loosen
Upper OEM bolt

Picture 1

Installation Instructions:

Step 1: To install your Shifter Linkage Guard, remove the lower OEM Bolt. (see picture 1)

Step 2: Loosen the upper OEM bolt and slide Guard between bracket and bolt. (see picture 1 and 2)

Step 3: Reinstall the lower OEM bolt and tighten both bolts.

Ensure factory bolts are tight. Inspect occasionally to insure they remain tight.



Picture 2