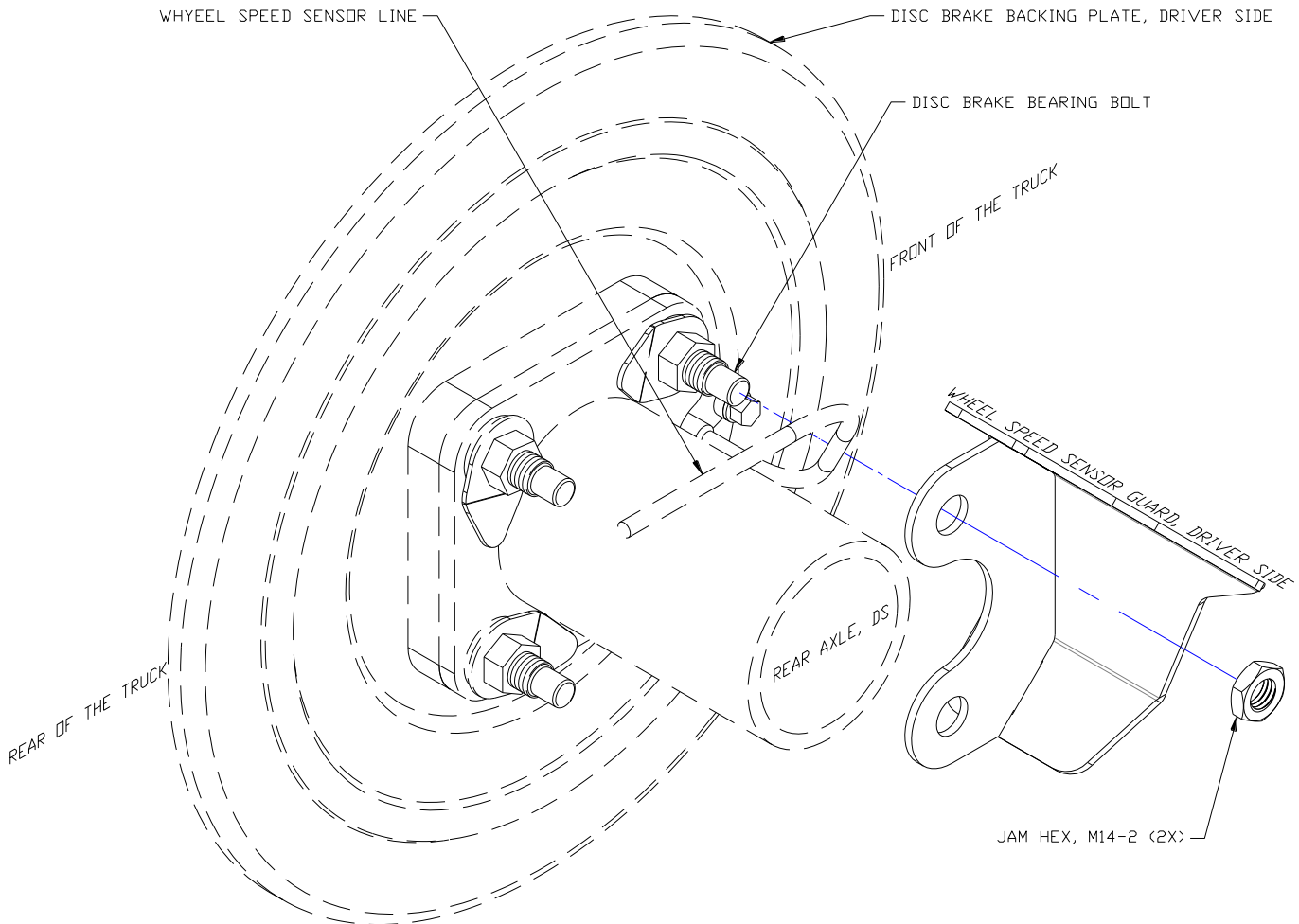


WHEEL SPEED SENSOR GUARD

Fits 2017 FORD F-150, w/o Electric Assist

PART #700355



PARTS BAG #702328 CONTAINS:

(4) 025031, Jam Hex, M14-2

INSTALLATION INSTRUCTIONS:

1. Before you install your Rear Wheel Speed Sensor Guard, see the diagram and parts list for all necessary parts. Start on the driver's side.
2. Install the driver side sensor guard on top of the two factory front bearing bolts, then fasten the two mount holes on the sensor guard with two M14 jam nuts.
NOTE: apply Loctite to each jam nut before fastening.
3. Repeat the procedure for the passenger side.