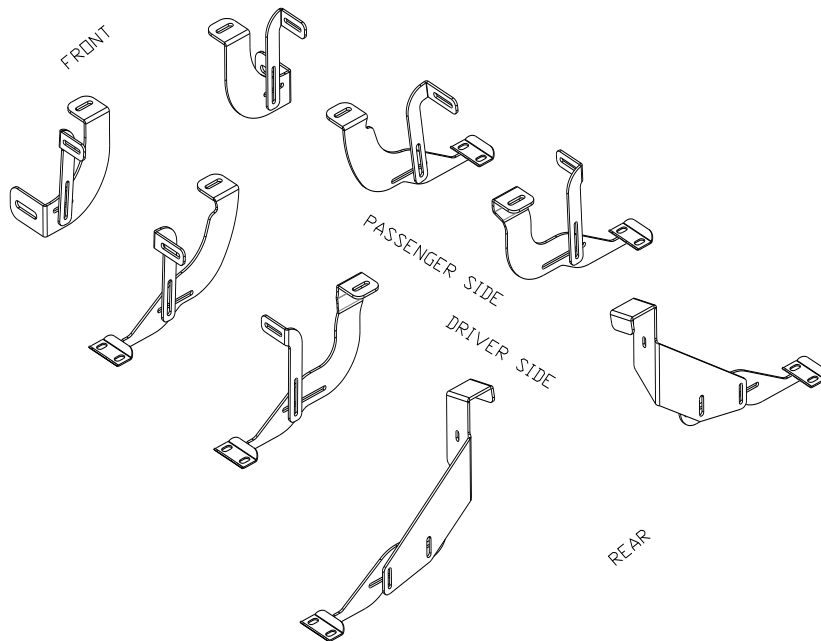




## 2014, DODGE 3500 CREW CAB LB #760064

Qty.	Part#	Description	Qty.	Part#	Description
1	Assembled	Front Driver Side Bracket	2	018045	5/8" Flat Washer
1	Assembled	Front Passenger Side Bracket	20	018046	3/8" Flat Washer
1	Assembled	Middle Driver Side Bracket	2	024003	5/8" Lock Washer
1	Assembled	Middle Passenger Side Bracket	20	024006	3/8" Lock Washer
1	Assembled	Middle Rear Driver Side Bracket	6	025015	3/8" Hex Nut
1	Assembled	Middle Rear Passenger Side Bracket	20.25'	080407	Bulb Seal Push-On
1	Assembled	Rear Driver Side Bracket	6	762236	3/8" x 1-1/2" T-bolt
1	Assembled	Rear Passenger Side Bracket	2	014010	3/8" -16 x 1.5 Capscrew
12	014012	3/8" x 1-1/2" Cap Screw	2	016036	3/8" clinch nut
2	014021	5/8" x 2" Cap Screw			



### 2014 Dodge HD CrewCab LB

#### Note: Start on Passenger Side

**Step 1:** Remove front cab mount bolt and install pre-assembled bracket loosely with the factory bolt. Watch out for bracket orientation. Set up the front bracket support strap using #762236 T-Bolt with #018046 3/8" flat washer, #024006 3/8" lock washer and #025015 3/8" hex nut.

**Step 2:** Repeat process for middle rear bracket.

**Step 3:** For Rear bracket, ream factory hole to 17/32", insert # 016036 Clinch nut to the factory hole and install pre-assembled bracket with #018046 3/8" flat washer, #024006 3/8" lock washer #014010 cap screw

**Step 4:** Lay pre-assembled board on the middle rear and rear bracket. Make sure board will not fall down. You should utilize a jack to avoid board from falling down. Line board up with the front bracket and set up #014021 5/8" cap screw with #018045 flat washer and #024003 5/8" lock washer. Do not tighten up the bolts, you need to level the board later.

**Step 5:** Remove any plastic wrap around bracket saddles.

**Step 6:** Use #014012 3/8" cap screw with #018046 flat washer and #024006 lock washer to install board to middle rear and rear bracket loosely.

**Step 7:** Remove middle cab mount bolt and install middle bracket with factory bolt loosely. Install board to bracket like you did with the middle rear bracket. Set up the middle bracket support strap like you did on the front support strap.

**Step 8:** Level board to Cab and tighten up the 8x #014012 cap screws. Secure all other bolts now.

**Step 9:** Driver side, drill a 17/32" Diameter hole for the rear bracket at the same location as the factory hole on the passenger side.

**Step 10:** Repeat Step 1 to step 8 for Driver Side.