



# 2018-23 Chevy Traverse

## Mud Flap Set, Front

### Mounting Diagram & Instructions

Kit# **GCR25F**  
766815/766723

#### IMPORTANT:

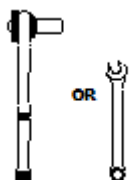
**Manufacturer is not responsible for negligent use of vehicle with mud flaps installed, including over-tightening of screws and bolts causing damage to vehicle or mud flaps.**



#### TOOLS REQUIRED-



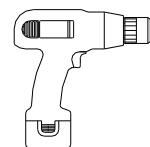
5/16" Open Wrench or  
Socket Wrench



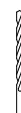
3/8" Open Wrench or  
Socket Wrench



T15 Torx  
Bit



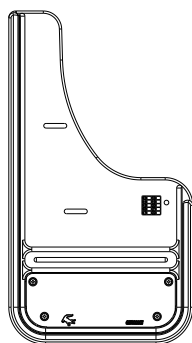
Electric or Rechargeable  
Drill



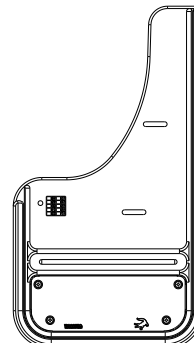
1/4" Drill  
Bit

#### FLAPS

(1) Flap Assembly,  
Front, DS

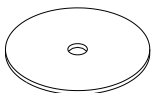


(1) Flap Assembly  
Front, PS



#### PARTS BAG # 766728

**a)** (4) Washer, Flat  
0.203" x 1.5", 18GA, SS  
Part #018066



**b)** (4) Washer, Flat  
0.203" ID x 1" OD, 18ga, SS  
Part #018081



**c)** (2) Washer, Nylon, Blk  
0.265" x 0.625" x 0.06"  
Part #054071



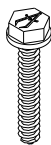
**d)** (2) Washer, Lock  
18-8SS, Helicoil  
Part #024001



**e)** (2) Screw, Mach.  
18-8SS, 10-24x1, Hex Hd  
Part #012022



**f)** (4) Bolt, Hex Flange  
M4.2 x 1" Blk  
Part #016041



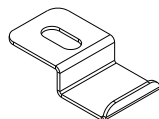
**g)** (2) Nut, Hex  
#10-24, SS  
Part #025003



**h)** (4) Spacer, Rubber  
1/4" ID x 1" OD x 1/4" Thk  
Part #080677



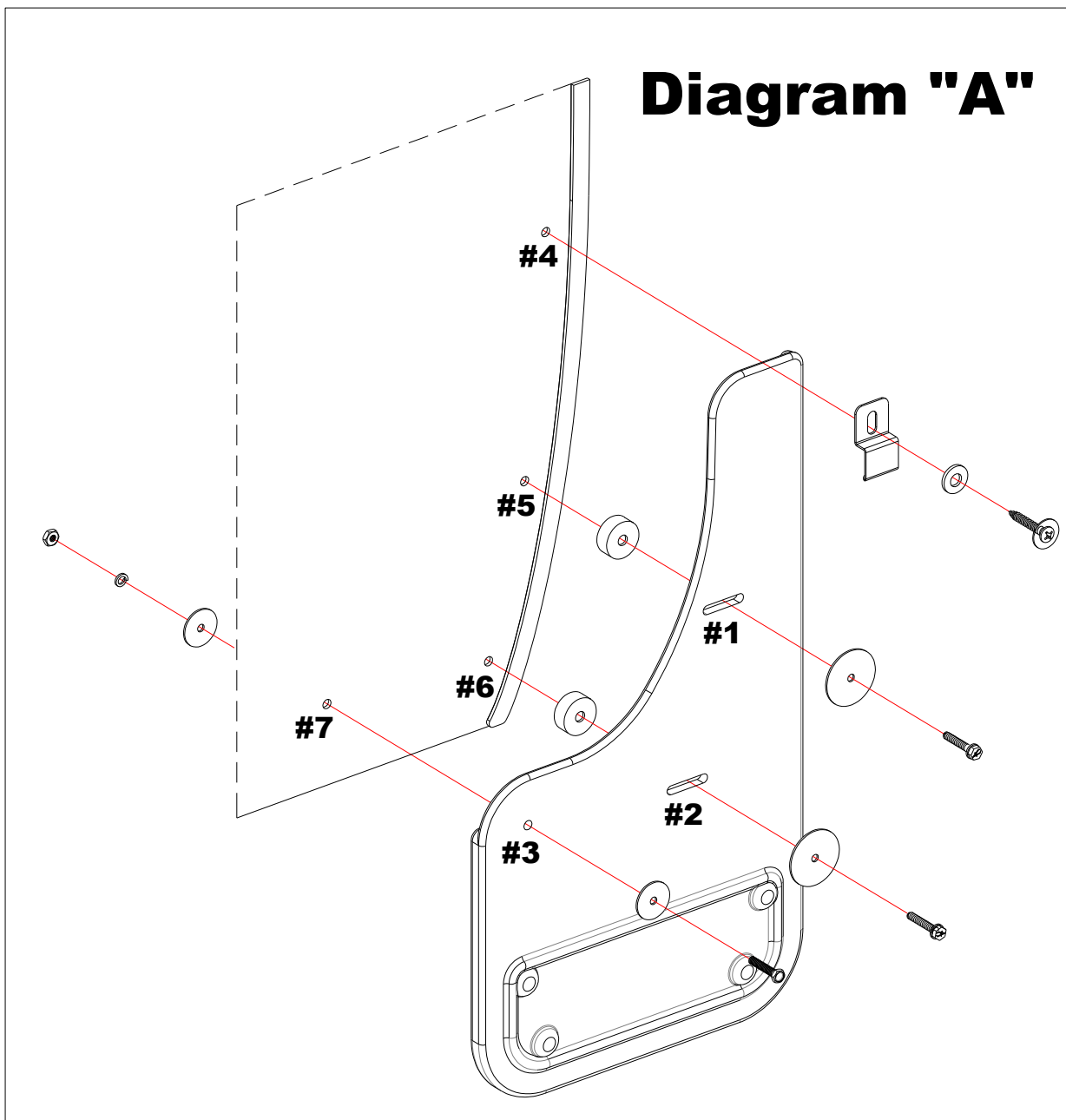
**h)** (2) "Z" Clip, w/lip  
0.281" x 1", SS  
Part #018067



#### INSTALLATION (For ease of installation it is suggested that the wheel be removed)

1. Before you install your Mud Flap Set, see the diagram and parts list for all necessary parts. Start on the driver's side.
2. Remove the three factory screws from the inner wheel well.
3. Secure the flap through holes #1 & #2, into factory holes #5 & #6 using a bolt (#016041), flat washer (#018066), and rubber spacer (#080677).

4. Install provided “Z” clip to upper factory hole #4 using the factory screw and supplied nylon washer (#054071). Secure the clip to the mud flap.
5. Using a bubble level or square, ensure that the mud flap is level. Viewing the vehicle from the back, the outer edge of the mud flap should appear parallel to the tires.
6. Carefully tighten all screws. Ensure that the mud flap is still level.
7. On the innermost part of the flap, drill a ¼” hole through the mud flap to create hole #3 and through liner to create hole #7.
8. Install the liner to the flap using the provided bolt (#012022), and a stainless steel washer (#018081), and secure with a stainless steel washer (#018081), a lock washer (#024001) and a hex nut (025003).
9. Repeat procedure for the passenger side.



Please check out our YouTube channel to see an install video for this application.





# GATORBACK

## MUDFLAPS

## 2018-23 Chevy Traverse

### Mud Flap Set, Rear

### Mounting Diagram & Instructions

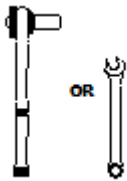
Kit# **GCR25R**  
766816/766729

#### IMPORTANT:

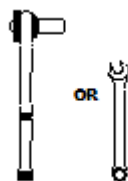
**Manufacturer is not responsible for negligent use of vehicle with mud flaps installed, including over-tightening of screws and bolts causing damage to vehicle or mud flaps.**



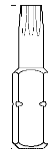
#### TOOLS REQUIRED-



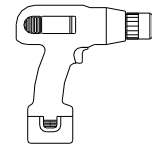
5/16" Open Wrench or  
Socket Wrench



3/8" Open Wrench or  
Socket Wrench



T15 Torx  
Bit



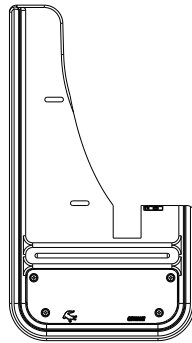
Electric or Rechargeable  
Drill



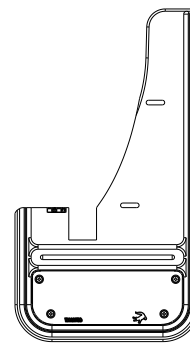
1/4" Drill  
Bit

#### FLAPS

(1) Flap Assembly,  
Front, DS

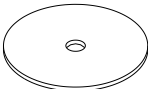


(1) Flap Assembly  
Front, PS



#### PARTS BAG # 766734

a) (4) Washer, Flat  
0.203" x 1.5", 18GA, SS  
Part #018066



b) (4) Washer, Flat  
0.203" ID x 1" OD, 18ga, SS  
Part #018081



c) (2) Washer, Nylon, Blk  
0.265" x 0.625" x 0.06"  
Part #054071



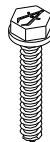
d) (2) Washer, Lock  
18-8SS, Helicoil  
Part #024001



e) (2) Screw, Mach.  
18-8SS, 10-24x1, Hex Hd  
Part #012022



f) (4) Bolt, Hex Flange  
M4.2 x 1" Blk  
Part #016041



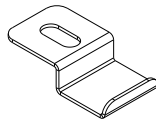
g) (2) Nut, Hex  
#10-24, SS  
Part #025003



h) (6) Spacer, Rubber  
1/4" ID x 1" OD x 1/4" Thk  
Part #080677



i) (2) "Z" Clip, w/lip  
0.281" x 1", SS  
Part #018067

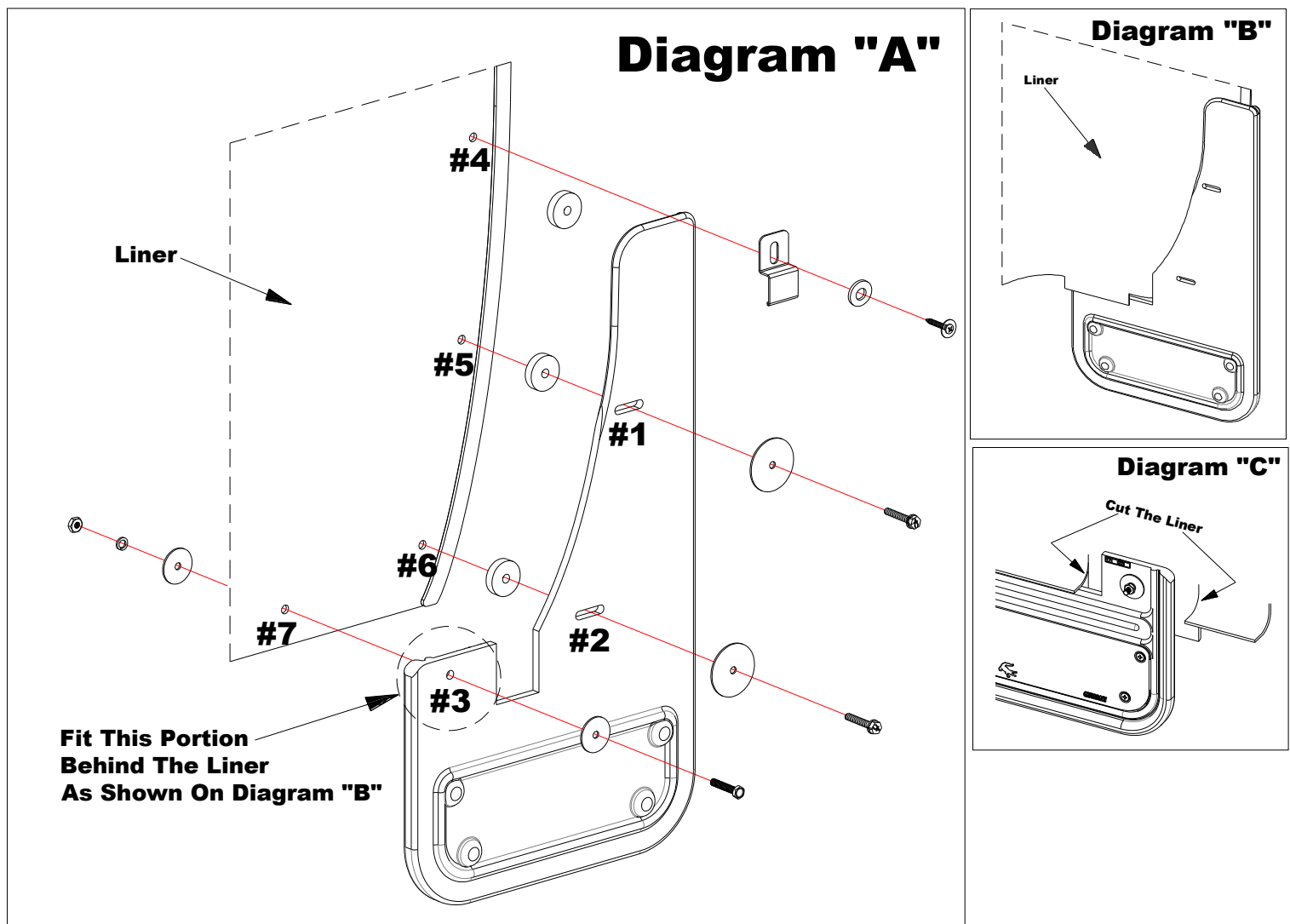


#### INSTALLATION (For ease of installation it is suggested that the wheel be removed)

- Before you install your Mud Flap Set, see the diagram and parts list for all necessary parts. Start on the driver's side.
- Remove the three factory screws from the inner wheel well.
- Secure the flap through holes #1 & #2 into factory holes #5 & #6, using a bolt (#016041), flat washer (#018066), and rubber spacer (#080677).



4. Ensure that the innermost part of the flap tucks behind the liner as shown in Diagram "B". Loosely secure at this point.
5. Install provided "Z" clip to upper factory hole #4 using the factory screw, and supplied nylon washer (#054071). Before tightening, place the rubber washer behind the flap as shown. Secure the clip to the mud flap.
6. Using a bubble level or square, ensure that the mud flap is level. Viewing the vehicle from the back, the outer edge of the mud flap should appear parallel to the tires.
7. Carefully tighten all screws. Ensure that the mud flap is still level.
8. Cut liner to allow flap to sit flush against the back of the liner. (See Diagram "C")
8. On the innermost part of the flap, drill a 1/4" hole through mud flap to create hole #3 and through liner to create hole #7.
9. Install the liner to the flap using the provided bolt (#012022), and a stainless steel washer (#018081), and secure with a stainless steel washer (#018081), a lock washer (#024001) and a hex nut (025003).
10. Repeat procedure for the passenger side.



Please check out our YouTube channel to see an install video for this application.

