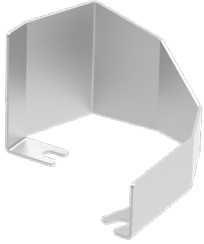
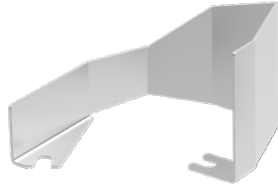


KIT INCLUDES:

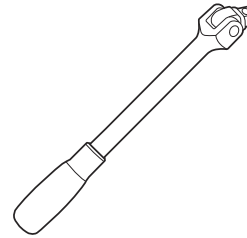


Driver Side
Part#702516

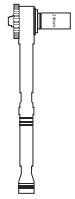


Passenger Side
Part #702517

TOOLS:



1/2" Drive Breaker Bar



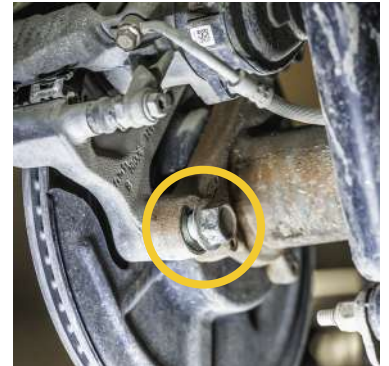
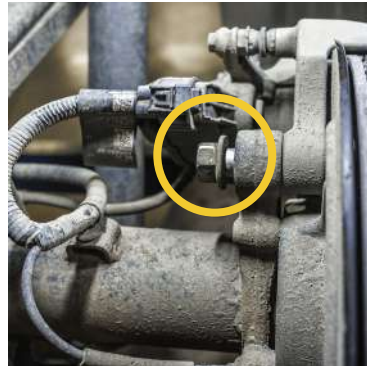
24mm Socket Wrench

INSTALLATION INSTRUCTIONS

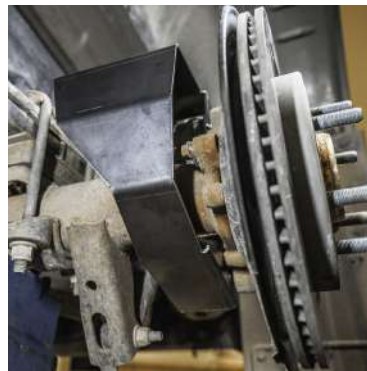
1. Start by removing the wheel.



2. Loosen the 2 caliper mounting bolts to the differential using a 1/2" drive breaker bar & 24mm socket.



3. Position the guard in front of the train axle & slide the top open tab hole of the guard into the top caliper bolt. Swing the bottom open tab hole of the guard into the bottom caliper bolt. (*Please note: it's important to install the top mount first).



4. Ensure to make the two open tab holes sit against the caliper bolts before re-tightening the bolts to the factory specs.