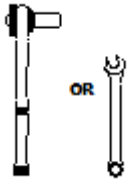


IMPORTANT:

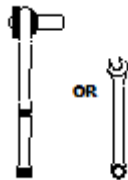
Manufacturer is not responsible for negligent use of vehicle with mud flaps installed, including over-tightening of screws and bolts causing damage to vehicle or mud flaps.



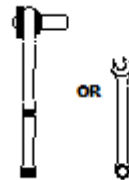
TOOLS REQUIRED-



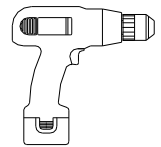
5/16" Open Wrench
or Socket Wrench



3/8" Open Wrench
or Socket Wrench



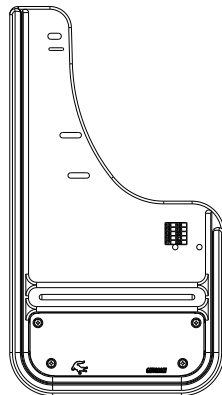
7/16" Open Wrench
or Socket Wrench



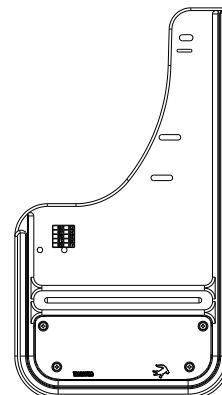
Electric or Rechargeable
Drill

FLAPS

(1) Flap Assembly,
Front, DS
Part #767055

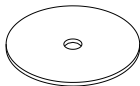


(1) Flap Assembly,
Front, PS
Part #767056

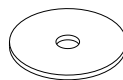


PARTS BAG # 767057

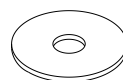
a) (4) Washer, Flat
0.203" x 1.5", 18GA, SS
Part #018066



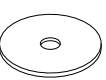
b) (10) Washer, Flat
0.203" x 1", 18ga, SS
Part #018031



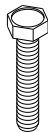
c) (2) Washer, Flat
0.281" x 1", 18ga, SS
Part #018028



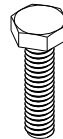
d) (6) Washer, Flat
0.190" x .062" Nylon
Part #054080



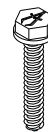
e) (4) Screw, Mach.
18-8SS, 10-24x1, Hex Hd
Part # 012022



f) (2) Capscrew, SS
1-4"-20 x 1", Hex Hd
Part #014007



g) (6) Bolt, SS
M4.2 x 1" Blk
Part #016041



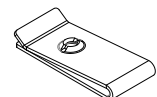
h) (4) Nut, Hex
#10-24, SS
Part # 025003



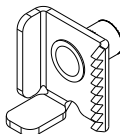
i) (4) Washer, Lock
18-8SS, Helicoil
Part #024001



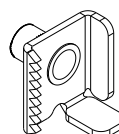
j) (6) Spring Nut
#8, 9/16" Reach
Part #028004



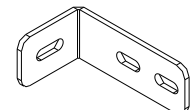
k) (1) Mount Clip
Driver's Side
Part #750582



l) (1) Mount Clip
Passenger's Side
Part #750584

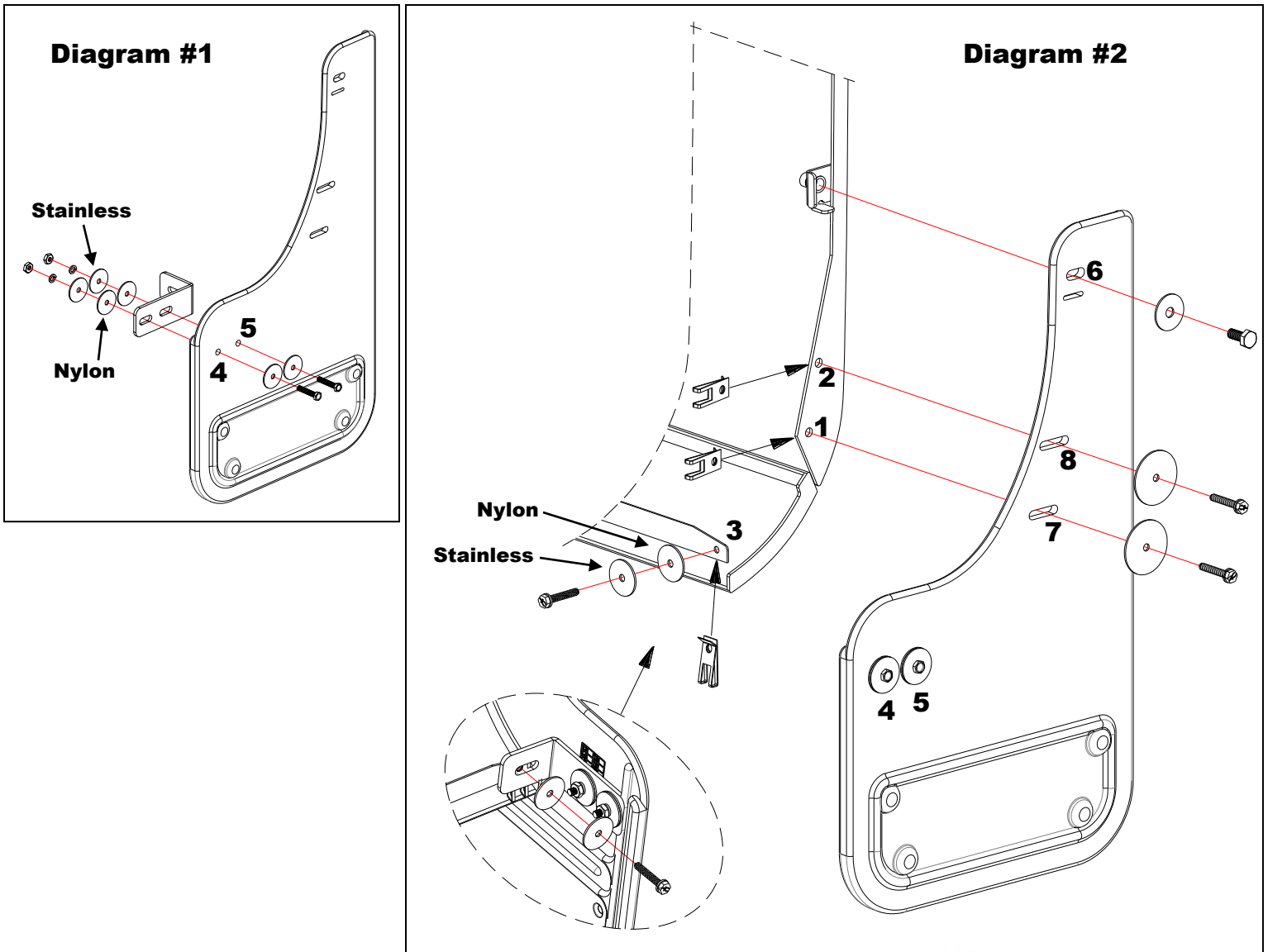


m) (2) Brace
Rear
Part # 767088



INSTALLATION *(For ease of installation it is suggested that the wheel be removed)*

1. Before you install your Mud Flap Set, see the diagram and parts list for all necessary parts. Start on the driver's side.
2. Remove the two factory push pins from hole #1 & #2 on the factory flare and discard.
3. Install two spring nuts onto the metal body behind the plastic flare where the push pins were removed from holes #1 & #2. Ensure that the spring nuts align with the holes in the plastic flare as shown in Diagram #2.
4. Install the third spring nut on the metal at the bottom of the flare on hole #3 as shown in Diagram #2.
5. Loosely install brace to mud flap through holes #4 and #5 using a machine screw (012022), two stainless washers (018031), a nylon washer (054080), a lock washer (024001) and a hex nut (025003) on each hole as shown in Diagram #1.
6. Loosely install mounting clip to hole #6 using a capscrew (014007) and a stainless steel washer (018028).
7. Install mud flap through hole #7 to hole #1 and through hole #8 to hole #2 using a stainless steel washer (018066) and bolt (016041) on each hole as shown in Diagram #2.
8. Slide mounting clip behind plastic flare and tighten until clip is tight to flare.
9. Install brace behind flare onto hole #3 using a bolt (016041), washer (018031) and nylon washer (054080).
10. Using a square or another levelling tool, ensure that the flap is square.
11. Tighten all fasteners.
12. Repeat procedure for the passenger's side.



Please check out our YouTube channel to see an install video for this application.

