

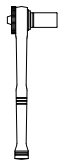
**IMPORTANT:**

**Manufacturer is not responsible for negligent use of vehicle with Sensor Guard Installed, Including over-tightening of screws and bolts causing damage to vehicle or guard.**

**TOOLS REQUIRED**



10mm Socket Wrench



13mm Socket Wrench

**GALVENIZED PARTS**

(1) Inner Guard, Drivers Side	Part #702387
(1) Inner Guard, Passenger Side	Part #702388
(1) Outer Guard, Drivers Side	Part #702389
(1) Outer Guard, Passenger Side	Part #702390

**INSTALLATION INSTRUCTIONS**

**Outer Sensor Guard**

1. Using a 10mm socket wrench loosen the 2 factory bolts circled in red on Diagram #1.
2. Slide the outer sensor guard into position, ensuring that it is sitting underneath the factory washers. Tighten the bolts loosened in step 1.

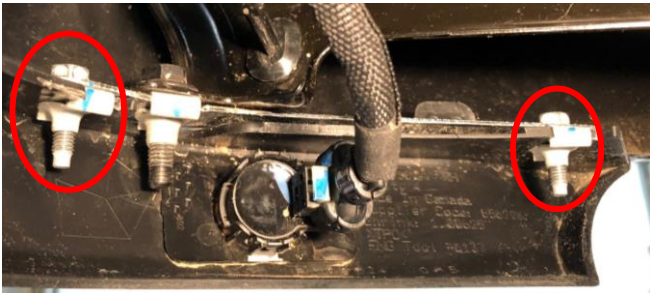


Diagram #1

**Inner Sensor Guard**

1. Using a 13mm socket wrench, loosen factory bolt labeled "A" on Diagram #2
2. Using a 10mm socket wrench, loosen factory bolt labeled "B" on Diagram #2
3. Slide the inner sensor guard into position, ensuring that it is sitting underneath the factory washers. Tighten the bolts loosened in steps 1 & 2.

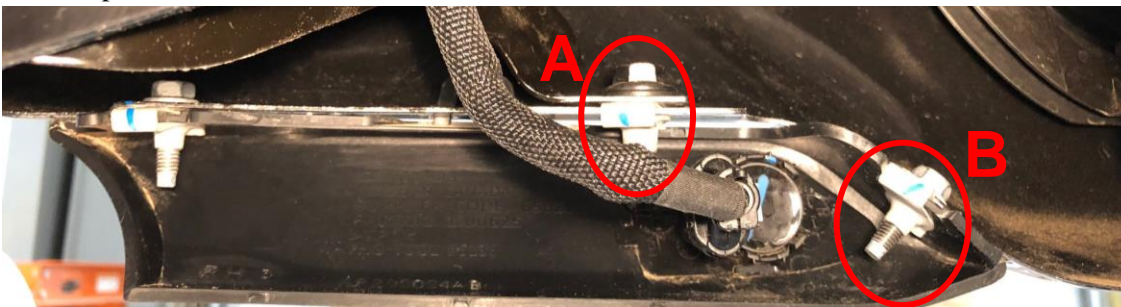


Diagram #2