



# GATORGEAR NERF BOARD

## Nerfboard Assembly Instructions

### IMPORTANT:

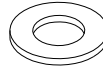
**Due to freight damage on boards in the past, we have redesigned our packaging to ensure that you always receive a quality, undamaged board. All boards are now delivered in 2 boxes, with each side of the board in two pieces to allow for smaller boxes which are easier to ship without damage. In making these changes, it does mean that a simple assembly is now required prior to installation. Please carefully read and follow the instructions provided for assembly. Manufacturer is not responsible for negligent use of vehicle with Nerfboard installed, including over-tightening or stripping of screws or bolts causing damage to vehicle or Nerfboard.**

### PARTS BAG #761140

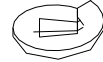
**a)** (6) Screw, Machine  
8-32 x 1/2", SS  
Part #012029



**b)** (2) Washer, Flat  
5/8", Plated  
Part #018045



**c)** (2) Washer, Lock  
5/8" Helicoil, SS  
Part #024003  
Installed on board



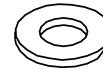
**d)** (6) Nut, Nylock.  
#8-32, SS  
Part # 025005



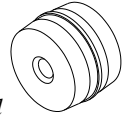
**f)** (2) Nut, Hex  
5/8"- 11 UNC , SS  
Part # 025014  
Installed on board



**g)** (6) Washer Flat  
3/16" x 3/8", Nylon  
Part #054041



**h)** (2) Insert, Poly  
3" Tube  
Part #760316  
Installed on board



### INSTALLATION

*(It is recommended that a cloth or other protective barrier be placed between the Nerfboard and the workspace to avoid scratching or otherwise damaging the board)*

#### Diagram #1:

1. Before assembling your Nerfboards, see the diagram & parts list for all necessary parts. Start on the driver's side. **Included anti-seize must be used on all 5/8" stainless steel bolts. It will prevent galling on install as well as prevent galvanic pitting of road salt.**
2. Remove nut and lock washer from the rear board section.
3. Slide the rear end of the front board into the center of the poly insert (h)
4. Loosely secure the rear end of the front board to the front end of the rear board using the supplied flat washer (b) lock washer (c), and hex nut (f). Gently tighten until both ends of the tubes are flush with the center ring of the poly insert (h)
5. Level the top plate of the front board with the top plate of the rear board and loosely secure hole #1 to hole #4 with a machine screw (a), nylon washer (g), and nylock nut (d).
6. Repeat the same procedure as in step 5 to secure hole #2 to hole #5, and to secure hole #3 to hole #6.
7. Carefully tighten the 5/8" x 11 UNC hex nut on the poly insert to approximately 90 ft. lbs., then tighten the remaining fasteners.

#### Diagram #2:

8. Flip the board top side up and install the bulb seal on the back flange of the board assembly, starting on one end and working down to the other end.
9. Repeat the procedure on the passenger's side.

(NOTE: The following steps are for boards with steps which sit over the seam of the front and rear tubes only. If your Nerfboard does not have a step in this location, please disregard this page.)

**Diagram #3:**

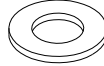
For Boards with 1 set of holes on the 3" tube and top plate, your kit will contain the following parts bag:

**Part Bag #761161**

*a) (4) Screw, Machine  
8-32 x 1/2", SS  
Part #012029*



*b) (4) Washer Flat  
3/16" x 3/8", Nylon  
Part #054041*



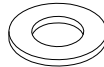
For Boards with 2 sets of holes on the 3" tube and top plate, your kit will contain the following parts bag:

**Part Bag #761162**

*a) (8) Screw, Machine  
8-32 x 1/2", SS  
Part #012029*



*b) (8) Washer Flat  
3/16" x 3/8", Nylon  
Part #054041*

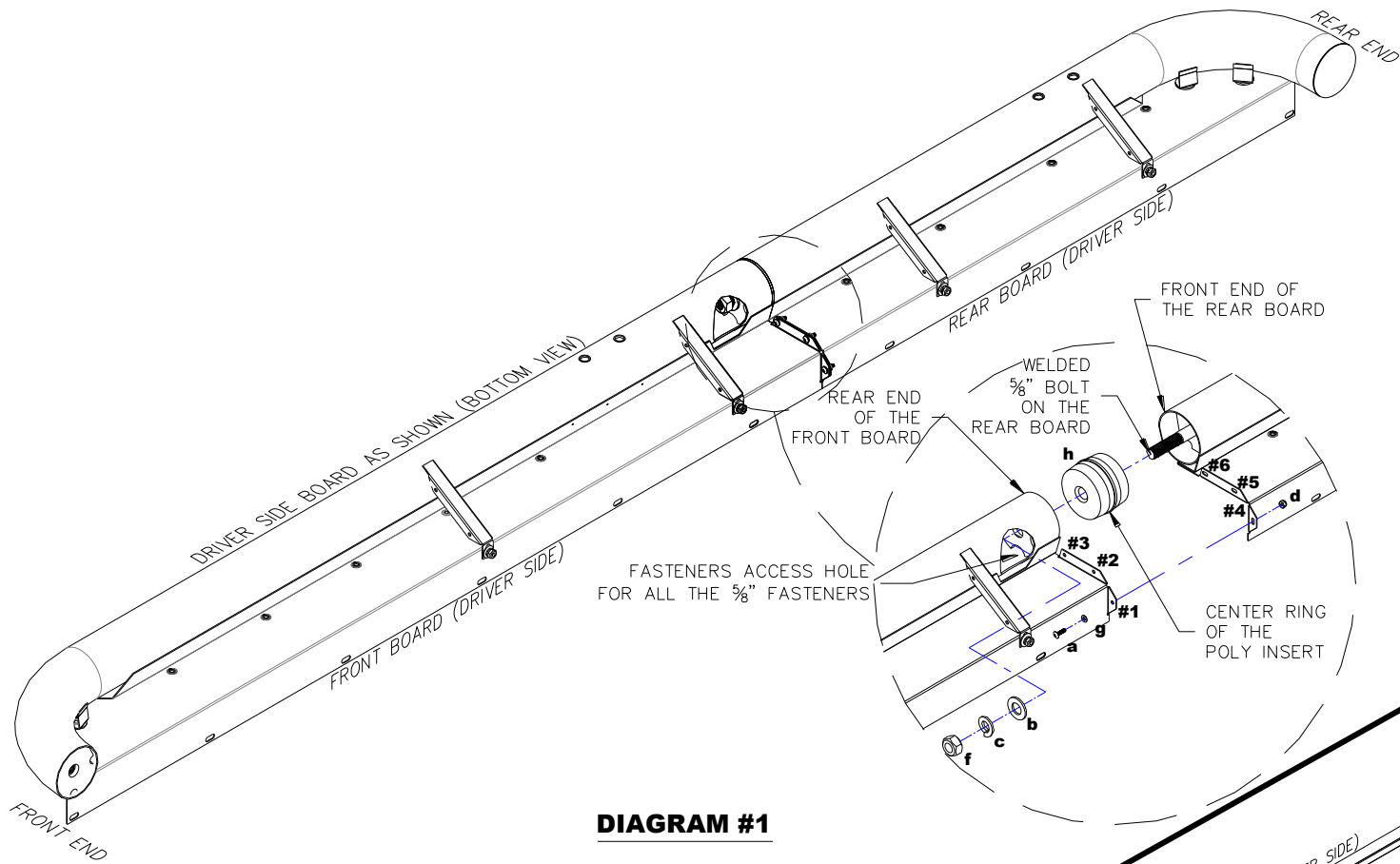


1. After securing the front and rear board together, and installing the bulb seal, secure the top hole on the front end of the center step to the top plate of the front board with a #8 nylon washer, and a #8 x 5/8" machine screw to the pre-installed clinch nut on the top of the plate (1 or 2 places dependent on the board style).
2. Secure the side hole on the front end of the center step to the side tube of the front board with a #8 nylon washer and a #8 x 5/8" machine screw to the pre-installed clinch nut on the side of the tube (1 or 2 places dependent on the board style).
3. Repeat the procedure on the passenger side.

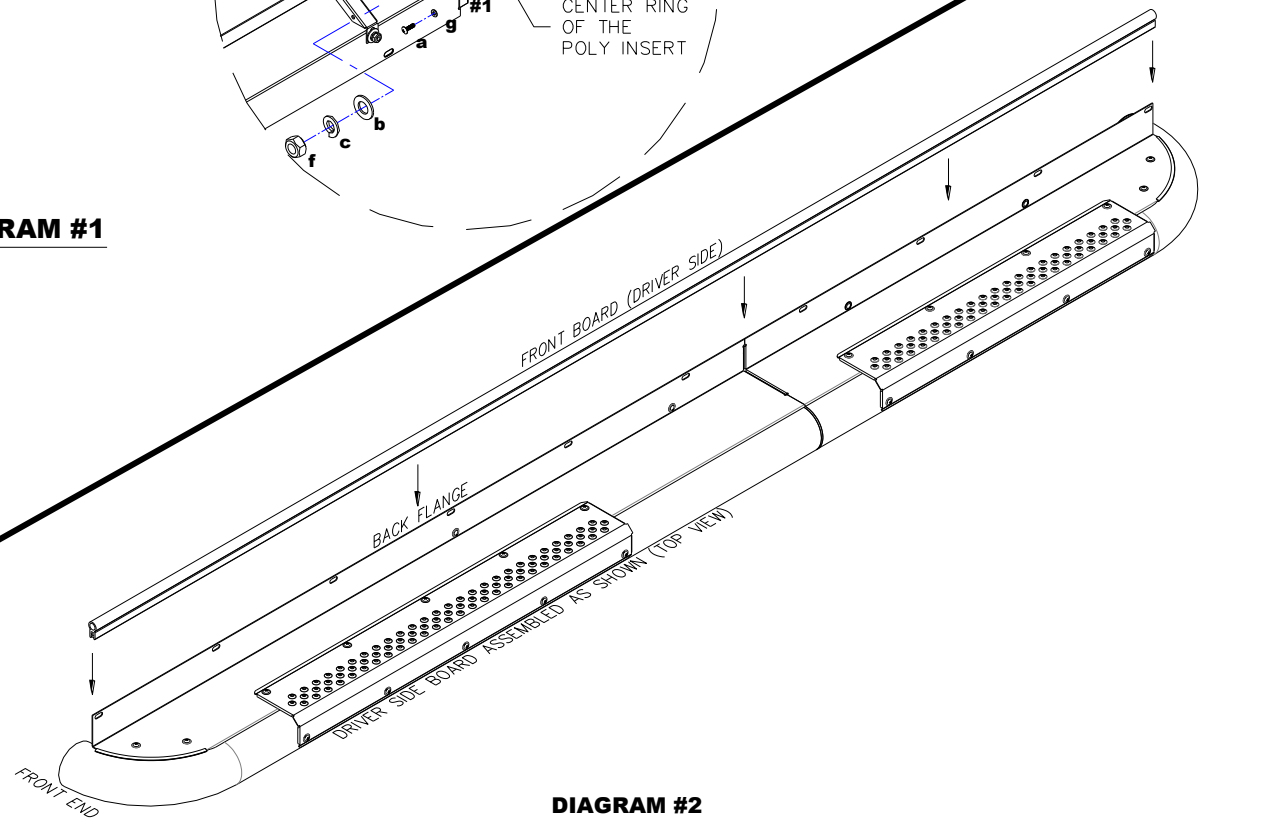
Manufactured in Canada by:  
Precision Design & Mfg.

Marketed by:  
Truck Hardware





**DIAGRAM #1**



**DIAGRAM #2**

(NOTE: The following steps are for boards with steps which sit over the seam of the front and rear tubes only. If your Nerfboard does not have a step in this location, please disregard this page.)

