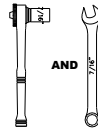


IMPORTANT:

Manufacturer is not responsible for negligent use of vehicle with Filler Panel installed, including over-tightening of screws and bolts causing damage to vehicle or filler panel.

TOOLS REQUIRED:



7/16" open and
Socket wrench

GUARDS:

(1) Splash Guard
Rear Wheel, Front, DS
Part # 702174



(1) Splash Guard
Rear Wheel Front, PS
Part # 702175

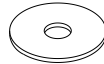


PARTS BAG #702176:

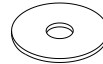
a) (10) Capscrew,
SS, 1/4"-20UNC x 1"
Part # 014007



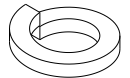
b) (10) Washer, Flat,
SS, 0.281" x 1"
Part # 018028



c) (4) Washer, Flat
Alum, 0.281" x 1"
Part # 018052



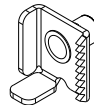
d) (2) Washer, Lock
Zinc Plt, 1/4" Helical Spring
Part # 024009



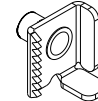
e) (2) Nut, Hex
Zinc Plt, 1/4"-20UNC
Part # 025021



f) (4) Mount Clip
RH, Clinch Nut
Part # 750582



g) (4) Mount Clip
LH, Clinch Nut
Part # 750584



INSTALLATION INSTRUCTIONS:

1. Before you install your splash guard, see diagram and parts list for all necessary parts. Cut protective plastic and peel away from stainless steel. Start on driver's side.
2. Cut the weather strip approximately 13-3/4" long and apply the adhesive side on the center of the wheel well or wheel flare in the same position as the splash guard panel where there is contact with the wheel well or wheel flare.
3. Install each mount clip to the holes #1 to #4 with a stainless steel capscrew and a stainless steel washer, then tighten the screw until the bottom tab of the mount clip just passes through the bottom slotted hole of holes #1 to #4.
4. Bolt the panel hole #5 to the factory wheel tub hole #6 as shown on the diagram with a stainless steel capscrew, a stainless steel washer, two aluminum washers, a 1/4" lock washer and a 1/4" hex nut. Loosely secure at this point.
5. Square the splash guard with the tire while putting pressure against the wheel well and tighten the factory screw on hole #5.
6. Secure the splash guard to the wheel well by sliding each of the previously installed mount clips on hole #1 to #4 to the wheel well and then tighten the screws.
7. Repeat the procedure for the passenger side.

